

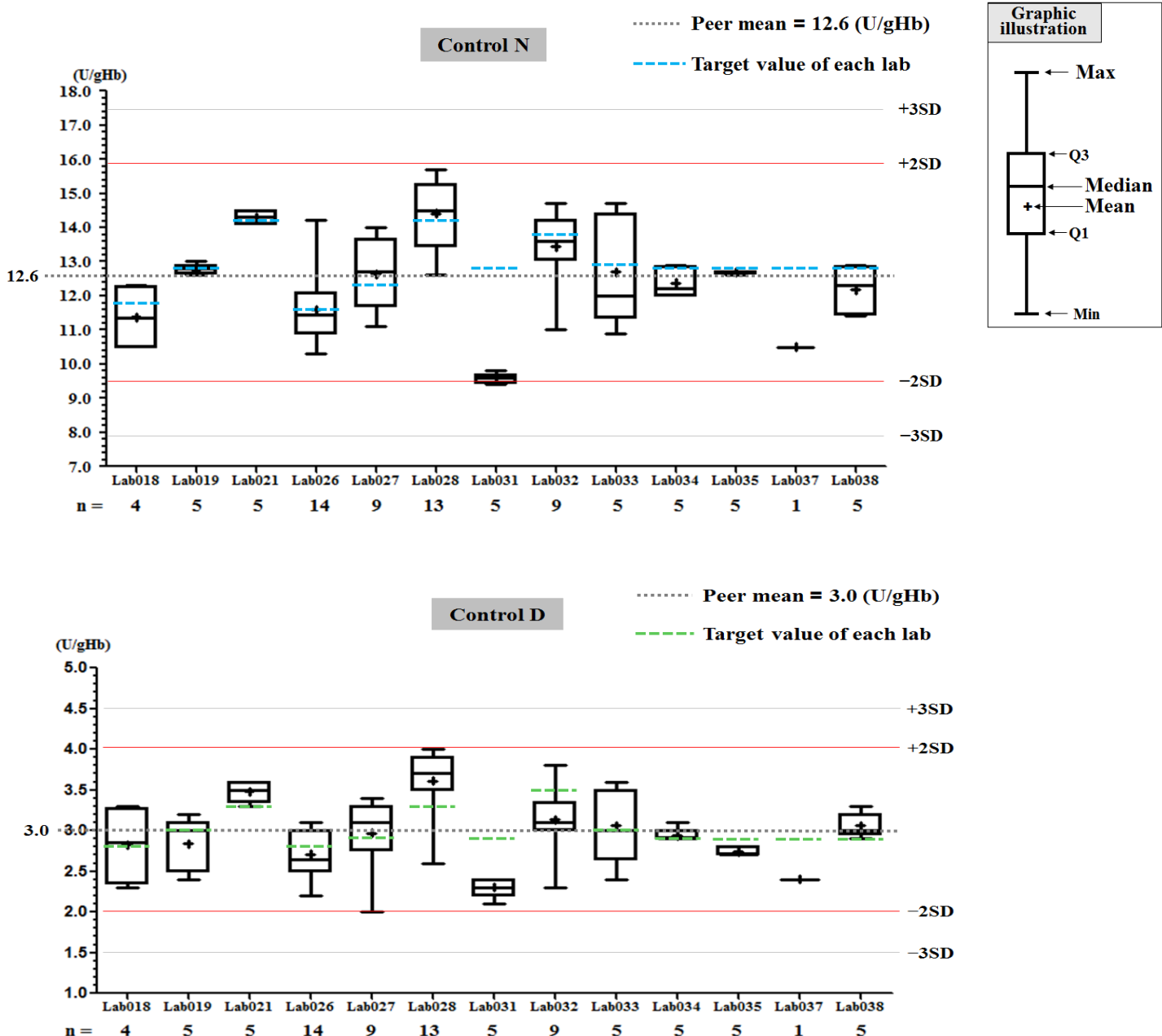
# Summary Report of IQC program for G6PD Quantitative Test - AMP Group - July 2015 -

## I. The statistic results of all laboratories in this month

G6PD	Control N (Lot No.:AC1203N)	Control D (Lot No.:AC1203D)
Labs	13	14
Received results number (n)	85	85
Median	12.7 (U/gHb)	3.0 (U/gHb)
Mean	12.6 (U/gHb)	3.0 (U/gHb)
SD	1.5	0.5
CV	11.9%	16.7%
Range of G6PD	9.4 ~ 15.7 (U/gHb)	2.0 ~ 4.0 (U/gHb)
Range of Hb	2.0 ~ 2.8 (g/dL)	2.1 ~ 3.3 (g/dL)

\*The statistic results are calculated from all labs reported in this month

## II. The distribution of G6PD reported for each lab in this survey



# QC Chart of Internal Quality Control (IQC)for G6PD Quantitative Test

Select LotNo : AC1203N (2014-01-01 ~ 2100-12-31) [Change](#)

[Print Table](#)

## Lab033

QC Control Lot No.	Control N		Control D	
	AC1203N		AC1203D	
Duration of the Analyzing	Month (2015/07)	CUM (2015/02/05~2015/07/31)	Month (2015/07)	CUM (2015/02/05~2015/07/31)
Runs (N)	5	26	5	26
Mean (U/gHb)	12.7	12.6	3.1	3.1
SD	1.6	1.1	0.5	0.3
CV (%)	12.6	8.7	16.1	9.7
Target Value (U/gHb)	12.9	12.9	3.0	3.0
Total Error (%)	26.7	19.8	35.6	22.7
TEa (%)	20	20	20	20
$\sigma$	1.5	2.0	1.0	1.7

Bias (%) =  $(| \text{Mean} - \text{Target} |) / \text{Target} \times 100\%$

TE : Total Error(%) = Bias (%) + 2 × CV (%)

$\sigma$  (Sigma) =  $[\text{TEa}\% - \text{Bias}\%] / \text{CV}\%$

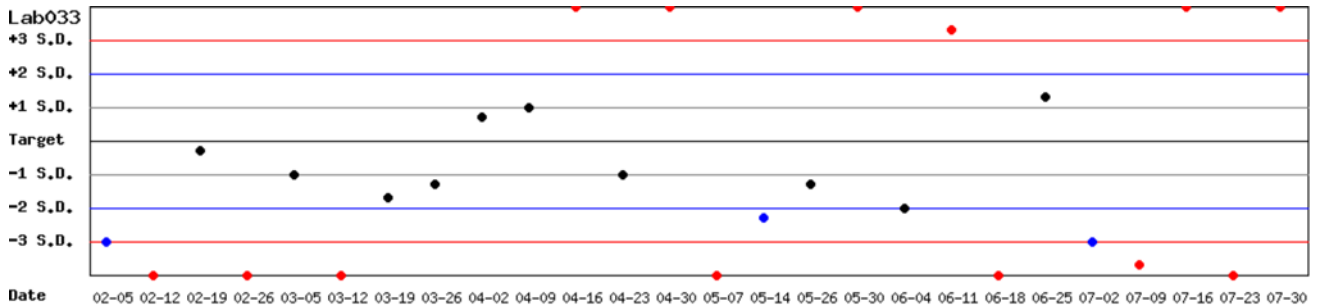
Month : 2015 07 [Change](#) ; Cumulative : from 2015 02 05 to 2015 07 31 [Change](#)

[TOP](#)

## Control N SDI QC Chart

Lot No.: AC1203N ; Duration : 2015-02-05 to 2015-07-31 ; Target : 12.9 ; SD : 0.30

Lab033



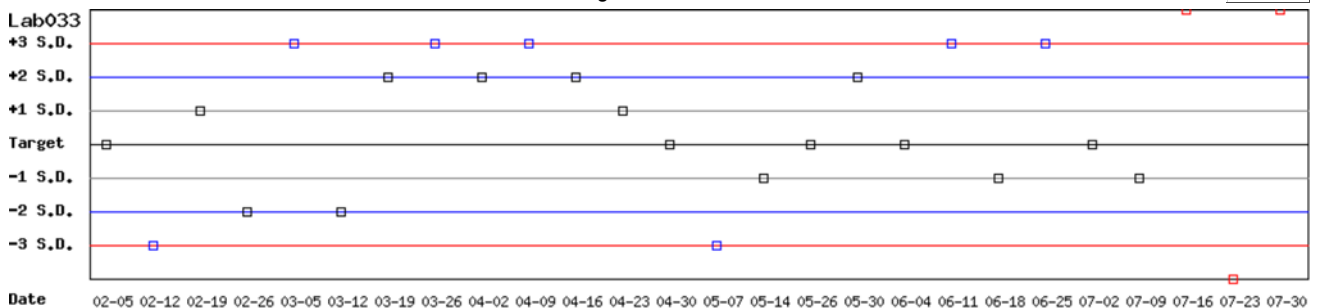
Month : 2015 07 [Change](#) ; Cumulative : from 2015 02 05 to 2015 07 31 [Change](#)

[TOP](#)

## Control D SDI QC Chart

Lot No.: AC1203D ; Duration : 2015-02-05 to 2015-07-31 ; Target : 3.0 ; SD : 0.10

Lab033



Month : 2015 07 [Change](#) ; Cumulative : from 2015 02 05 to 2015 07 31 [Change](#)

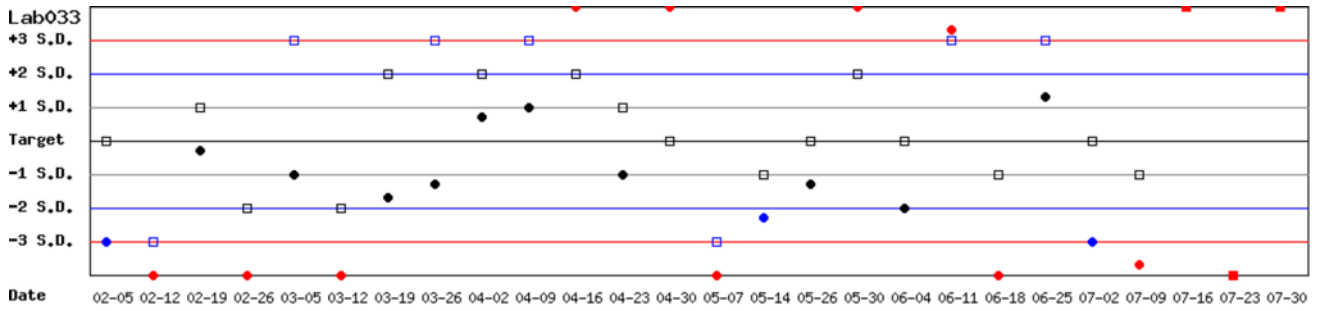
[TOP](#)

## Control N and Control D SDI QC Chart

Lot No.: AC1203N ; Duration : 2015-02-05 to 2015-07-31 ; Target : 12.9 ; SD : 0.30 (●)

Lot No.: AC1203D ; Duration : 2015-02-05 to 2015-07-31 ; Target : 3.0 ; SD : 0.10 (□)

Lab033



Month : 2015 07  ; Cumulative : from 2015 02 05 to 2015 07 31

[\[TOP\]](#)

## Peer Group Statistics (Table 1)

Select LotNo : AC1203N (2014-01-01 ~ 2100-12-31) ▼ Change

Select Reagent Kit : 2 - AMP ▼ Change

[Print Table 1](#)

### Monthly

Month : 2015 ▼ 07 ▼ Change

UnitID <sup>†</sup>	Reagent Kit (Code) <sup>†</sup>	Control N (Lot No.: AC1203N)								Control D (Lot No.: AC1203D)							
		Target (U/gHb)	Mean (U/gHb)	n for Mean	SD	CV (%)	TE (%)	TEa (%)	σ	Target (U/gHb)	Mean (U/gHb)	n for Mean	SD	CV (%)	TE (%)	TEa (%)	σ
<a href="#">Lab018</a>	2	11.8	11.4	4	1.0	8.8	20.9	20	1.9	2.8	2.8	4	0.5	17.9	35.7	20	1.1
<a href="#">Lab019</a>	2	12.9	12.8	5	0.2	1.6	3.9	20	>6	3.0	2.8	5	0.3	10.7	28.1	20	1.2
<a href="#">Lab021</a>	2	14.2	14.3	5	0.2	1.4	3.5	20	>6	3.3	3.5	5	0.1	2.9	11.8	20	4.8
<a href="#">Lab026</a>	2	11.6	11.6	14	1.0	8.6	17.2	36	4.2	2.7	2.7	14	0.3	11.1	22.2	36	3.2
<a href="#">Lab027</a>	2	12.3	12.6	9	1.0	7.9	18.3	20	2.2	2.9	3.0	9	0.4	13.3	30.1	20	1.2
<a href="#">Lab028</a>	2	14.2	14.4	13	1.0	6.9	15.3	20	2.7	3.3	3.6	13	0.4	11.1	31.3	20	1.0
<a href="#">Lab031</a>	2	12.8	9.6	5	0.2	2.1	29.2	20	-2.4	2.9	2.3	5	0.1	4.3	29.4	20	-0.2
<a href="#">Lab032</a>	2	13.8	13.4	9	1.1	8.2	19.3	20	2.1	3.5	3.1	9	0.4	12.9	37.2	20	0.7
<a href="#">Lab033</a>	2	12.9	12.7	5	1.6	12.6	26.7	20	1.5	3.0	3.1	5	0.5	16.1	35.6	20	1.0
<a href="#">Lab034</a>	2	12.8	12.4	5	0.4	3.2	9.6	20	5.3	2.9	2.9	5	0.1	3.4	6.9	20	5.9
<a href="#">Lab035</a>	2	12.8	12.7	5	0.0	0.0	0.8	20	>6	2.9	2.7	5	0.1	3.7	14.3	20	3.5
<a href="#">Lab037</a>	2	12.8	10.5	1	-	-	-	20	-	2.9	2.4	1	-	-	-	20	-
<a href="#">Lab038</a>	2	12.8	12.2	5	0.7	5.7	16.2	20	2.7	2.9	3.1	5	0.2	6.5	19.8	20	2.0
Total	-	-	12.6	85	1.5	11.9	-	-	-	-	3.0	85	0.5	16.7	-	-	-

Bias (%) = [ ( | Mean - Target | ) / Target ] x 100%

TE : Total Error(%) = Bias (%) + 2 × CV (%)

σ (Sigma) = [TEa% - Bias (%) ] / CV (%)

[TOP](#)

### Cumulative

Cumulative : from 2014 ▼ 02 ▼ 01 ▼ to 2015 ▼ 07 ▼ 31 ▼ Change

UnitID <sup>†</sup>	Reagent Kit (Code) <sup>†</sup>	Control N (Lot No.: AC1203N)								Control D (Lot No.: AC1203D)							
		Target (U/gHb)	Mean (U/gHb)	n for Mean	SD	CV (%)	TE (%)	TEa (%)	σ	Target (U/gHb)	Mean (U/gHb)	n for Mean	SD	CV (%)	TE (%)	TEa (%)	σ
<a href="#">Lab017</a>	2	14.2	13.8	36	1.6	11.6	26.0	20	1.5	3.3	3.9	36	1.4	35.9	90.0	20	0.1
<a href="#">Lab018</a>	2	11.8	10.6	53	1.7	16.0	42.2	20	0.6	2.8	2.5	53	1.2	48.0	106.7	20	0.2
<a href="#">Lab019</a>	2	12.9	12.0	73	1.3	10.8	28.6	20	1.2	3.0	2.7	73	0.4	14.8	39.6	20	0.7
<a href="#">Lab021</a>	2	14.2	14.3	19	0.2	1.4	3.5	20	>6	3.3	3.5	19	0.1	2.9	11.8	20	4.8
<a href="#">Lab024</a>	2	11.6	11.1	39	1.3	11.7	27.7	20	1.3	2.7	2.7	39	0.4	14.8	29.6	20	1.4
<a href="#">Lab026</a>	2	11.6	11.4	188	1.7	14.9	31.5	36	2.3	2.7	2.8	188	0.5	17.9	39.4	36	1.8
<a href="#">Lab027</a>	2	12.3	11.8	113	1.7	14.4	32.9	20	1.1	2.9	2.7	113	0.5	18.5	43.9	20	0.7
<a href="#">Lab028</a>	2	14.2	13.6	113	1.4	10.3	24.8	20	1.5	3.3	3.4	113	0.7	20.6	44.2	20	0.8
<a href="#">Lab031</a>	2	12.8	9.9	50	1.3	13.1	48.9	20	-0.2	2.9	2.3	50	0.4	17.4	55.5	20	0.0
<a href="#">Lab032</a>	2	13.8	10.8	142	1.8	16.7	55.1	20	-0.1	3.5	2.5	142	0.5	20.0	68.6	20	-0.4
<a href="#">Lab033</a>	2	12.9	12.1	71	1.1	9.1	24.4	20	1.5	3.0	2.9	71	0.3	10.3	24.0	20	1.6
<a href="#">Lab034</a>	2	12.8	12.6	23	0.4	3.2	7.9	20	5.8	2.9	3.0	23	0.1	3.3	10.1	20	5.0
<a href="#">Lab035</a>	2	12.8	12.9	20	0.9	7.0	14.7	20	2.7	2.9	3.0	20	0.4	13.3	30.1	20	1.2
<a href="#">Lab037</a>	2	12.8	12.3	4	1.4	11.4	26.7	20	1.4	2.9	3.0	4	0.4	13.3	30.1	20	1.2
<a href="#">Lab038</a>	2	12.8	13.0	9	1.3	10.0	21.6	20	1.8	2.9	3.5	9	0.6	17.1	55.0	20	0.0
Total	-	-	11.8	953	1.9	16.1	-	-	-	-	2.8	953	0.7	25.0	-	-	-

Bias (%) = [ ( | Mean - Target | ) / Target ] x 100%

TE : Total Error(%) = Bias (%) + 2 × CV (%)

σ (Sigma) = [TEa% - Bias (%) ] / CV (%)

[TOP](#)

Reagent Kit	Reagent Code
AMP	2

## Peer Group Statistics (Table 2)

Select LotNo :

Select Reagent Kit :

### Control N Month vs. Cumulative

		Control N (Lot No.: AC1203N)															
		Month (2015/07)								CUM (2014/02/01~2015/07/31)							
UnitID <span style="font-size: small;">↑</span>	Reagent Kit (Code) <span style="font-size: small;">↑</span>	Target (U/gHb)	Mean (U/gHb)	n for Mean	SD	CV (%)	TE (%)	TEa (%)	σ	Target (U/gHb)	Mean (U/gHb)	n for Mean	SD	CV (%)	TE (%)	TEa (%)	σ
<a href="#">Lab017</a>	2	14.2	-	0	-	-	-	20	-	14.2	13.8	36	1.6	11.6	26.0	20	1.5
<a href="#">Lab018</a>	2	11.8	11.4	4	1.0	8.8	20.9	20	1.9	11.8	10.6	53	1.7	16.0	42.2	20	0.6
<a href="#">Lab019</a>	2	12.9	12.8	5	0.2	1.6	3.9	20	>6	12.9	12.0	73	1.3	10.8	28.6	20	1.2
<a href="#">Lab021</a>	2	14.2	14.3	5	0.2	1.4	3.5	20	>6	14.2	14.3	19	0.2	1.4	3.5	20	>6
<a href="#">Lab024</a>	2	11.6	-	0	-	-	-	20	-	11.6	11.1	39	1.3	11.7	27.7	20	1.3
<a href="#">Lab026</a>	2	11.6	11.6	14	1.0	8.6	17.2	36	4.2	11.6	11.4	188	1.7	14.9	31.5	36	2.3
<a href="#">Lab027</a>	2	12.3	12.6	9	1.0	7.9	18.3	20	2.2	12.3	11.8	113	1.7	14.4	32.9	20	1.1
<a href="#">Lab028</a>	2	14.2	14.4	13	1.0	6.9	15.3	20	2.7	14.2	13.6	113	1.4	10.3	24.8	20	1.5
<a href="#">Lab031</a>	2	12.8	9.6	5	0.2	2.1	29.2	20	-2.4	12.8	9.9	50	1.3	13.1	48.9	20	-0.2
<a href="#">Lab032</a>	2	13.8	13.4	9	1.1	8.2	19.3	20	2.1	13.8	10.8	142	1.8	16.7	55.1	20	-0.1
<a href="#">Lab033</a>	2	12.9	12.7	5	1.6	12.6	26.7	20	1.5	12.9	12.1	71	1.1	9.1	24.4	20	1.5
<a href="#">Lab034</a>	2	12.8	12.4	5	0.4	3.2	9.6	20	5.3	12.8	12.6	23	0.4	3.2	7.9	20	5.8
<a href="#">Lab035</a>	2	12.8	12.7	5	0.0	0.0	0.8	20	>6	12.8	12.9	20	0.9	7.0	14.7	20	2.7
<a href="#">Lab037</a>	2	12.8	10.5	1	-	-	-	20	-	12.8	12.3	4	1.4	11.4	26.7	20	1.4
<a href="#">Lab038</a>	2	12.8	12.2	5	0.7	5.7	16.2	20	2.7	12.8	13.0	9	1.3	10.0	21.6	20	1.8
<b>Total</b>	-	-	12.6	85	1.5	11.9	-	-	-	-	11.8	953	1.9	16.1	-	-	-

Bias (%) = [ ( | Mean - Target | ) / Target ] x 100%

TE : Total Error(%) = Bias (%) + 2 x CV (%)

σ (Sigma) = [TEa% - Bias (%) ] / CV (%)

Month :

Cumulative : from    to

[TOP](#)

### Control D Month vs. Cumulative

		Control D (Lot No.: AC1203D)															
		Month (2015/07)								CUM (2014/02/01~2015/07/31)							
UnitID <span style="font-size: small;">↑</span>	Reagent Kit (Code) <span style="font-size: small;">↑</span>	Target (U/gHb)	Mean (U/gHb)	n for Mean	SD	CV (%)	TE (%)	TEa (%)	σ	Target (U/gHb)	Mean (U/gHb)	n for Mean	SD	CV (%)	TE (%)	TEa (%)	σ
<a href="#">Lab017</a>	2	3.3	-	0	-	-	-	20	-	3.3	3.9	36	1.4	35.9	90.0	20	0.1
<a href="#">Lab018</a>	2	2.8	2.8	4	0.5	17.9	35.7	20	1.1	2.8	2.5	53	1.2	48.0	106.7	20	0.2
<a href="#">Lab019</a>	2	3.0	2.8	5	0.3	10.7	28.1	20	1.2	3.0	2.7	73	0.4	14.8	39.6	20	0.7
<a href="#">Lab021</a>	2	3.3	3.5	5	0.1	2.9	11.8	20	4.8	3.3	3.5	19	0.1	2.9	11.8	20	4.8
<a href="#">Lab024</a>	2	2.7	-	0	-	-	-	20	-	2.7	2.7	39	0.4	14.8	29.6	20	1.4
<a href="#">Lab026</a>	2	2.7	2.7	14	0.3	11.1	22.2	36	3.2	2.7	2.8	188	0.5	17.9	39.4	36	1.8
<a href="#">Lab027</a>	2	2.9	3.0	9	0.4	13.3	30.1	20	1.2	2.9	2.7	113	0.5	18.5	43.9	20	0.7
<a href="#">Lab028</a>	2	3.3	3.6	13	0.4	11.1	31.3	20	1.0	3.3	3.4	113	0.7	20.6	44.2	20	0.8
<a href="#">Lab031</a>	2	2.9	2.3	5	0.1	4.3	29.4	20	-0.2	2.9	2.3	50	0.4	17.4	55.5	20	0.0
<a href="#">Lab032</a>	2	3.5	3.1	9	0.4	12.9	37.2	20	0.7	3.5	2.5	142	0.5	20.0	68.6	20	-0.4
<a href="#">Lab033</a>	2	3.0	3.1	5	0.5	16.1	35.6	20	1.0	3.0	2.9	71	0.3	10.3	24.0	20	1.6
<a href="#">Lab034</a>	2	2.9	2.9	5	0.1	3.4	6.9	20	5.9	2.9	3.0	23	0.1	3.3	10.1	20	5.0
<a href="#">Lab035</a>	2	2.9	2.7	5	0.1	3.7	14.3	20	3.5	2.9	3.0	20	0.4	13.3	30.1	20	1.2
<a href="#">Lab037</a>	2	2.9	2.4	1	-	-	-	20	-	2.9	3.0	4	0.4	13.3	30.1	20	1.2
<a href="#">Lab038</a>	2	2.9	3.1	5	0.2	6.5	19.8	20	2.0	2.9	3.5	9	0.6	17.1	55.0	20	0.0
<b>Total</b>	-	-	3.0	85	0.5	16.7	-	-	-	-	2.8	953	0.7	25.0	-	-	-

Bias (%) = [ ( | Mean - Target | ) / Target ] x 100%

TE : Total Error(%) = Bias (%) + 2 x CV (%)

σ (Sigma) = [TEa% - Bias (%) ] / CV (%)

Month :

Cumulative : from    to

[TOP](#)

Reagent Kit	Reagent Code
AMP	2